

Room With A View

Park Yourself in a Rare Gem

Located within Poulter Park, Bishopsford House is a stunning new development of sixteen luxury apartments in Morden, Surrey. This Gothic-style country mansion is nothing short of a tranquil oasis in the Capital, reached via a winding driveway and surrounded by acres of parkland.

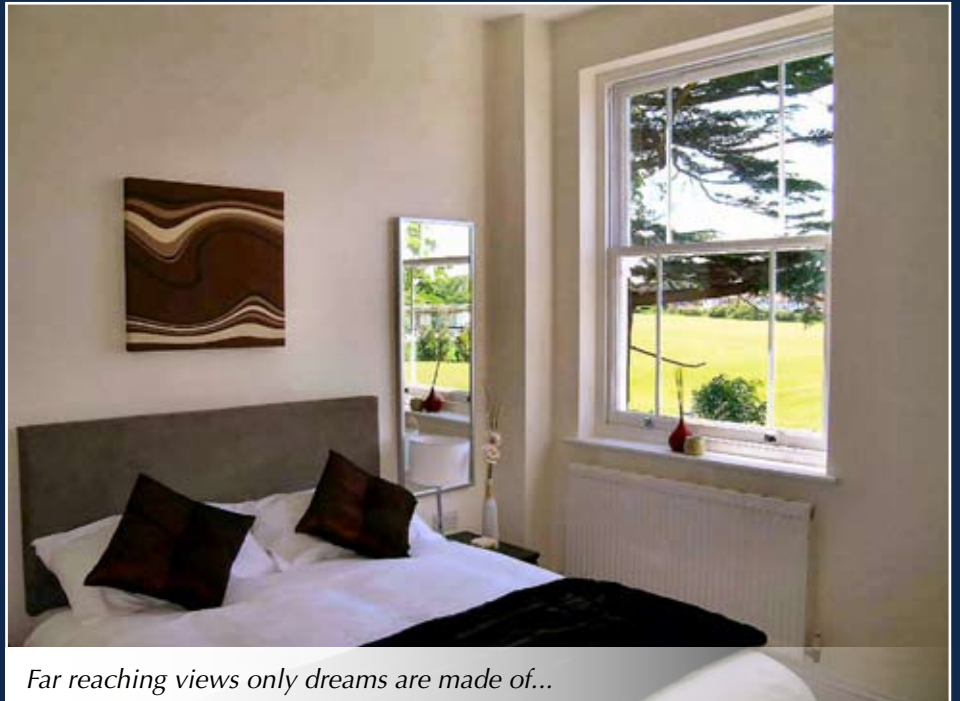
When luxury property developer 'Harringtons' first saw Bishopsford House it had been devastated by fire. Today, it's simply breathtaking and provides communal gardens, private parking and views that sweep down towards the River Wandle. In fact, because the property is located on the crest of a hill, the far-reaching views from the first and second floors are quite literally awe inspiring.

The House was originally built for the successful drug merchant, Alfred Attwood, and has a colourful history of ownership being purchased by the Anglo-American Oil Company in 1920 as well as the British Legion London branch. In 1928, the house and parkland were bought by the Greater London Playing Fields Association and after the trustees of the late Reginald Clifford Poulter gave the Association a monetary gift, the park was named after the donor. Sadly, the building was razed to the ground by fire in August 2001.

What followed was a gargantuan task worthy of only the most experienced and skilled developer. The local planning authority ensured the colourful history of the House was retained so they would only grant permission for its redevelopment if the appearance of the house exactly replicated that of the original building. So how could any architect design a faithful reproduction of a building that had been so badly damaged? A project of this nature took months of dedication and commitment.

Harringtons gained permission to convert the property to residential use and architects researched archive photos along with historical data to recreate designs of the stunning structure. Construction teams worked to demanding plans detailing the exacting standards set by the developers and the materials have been carefully chosen to retain the rich heritage of this imposing property – the search for bricks alone took months!

Cyril Mullen, the Director in charge of the project, said "We are delighted to have been able to complete this demanding project and meet the demands of the planners in recreating a Gothic Mansion. Everyone involved has worked with passion and great skill to complete the work exactly as the original would have been. We are very proud of the finished building that now provides spacious



Far reaching views only dreams are made of...

luxury apartments for stylish living". The finished development now stands testimony to the devotion of everyone involved. From old sepia photographs and reams of historical research, Harringtons have created history.

Every apartment in this development is finished to the highest of standards and the ground floor homes boast patio gardens. Each property features an en suite shower room and smart bathroom as well as a fully integrated kitchen, contemporary appliances and neutral décor. The majority have a balcony too. The well-proportioned reception rooms are enviable to say the least, and each apartment is also complemented by gas central heating, sealed unit double glazing and an entry telephone system. Along with allocated parking, delightful communal gardens and an N.H.B.C guarantee, these are the kind of homes dreams are made of.



Bishopsford House



Green landscape of Poulter Park

Bishopsford House is located off the A217 close to an excellent range of transport links including road links to the M25" says Sean Purtill, Partner at Ellisons. "The frequent Croydon Tram link is just a short walk away and from its first stop, Mitcham, Victoria Station is less than twenty minutes by train. Wimbledon is also easily accessible and provides access to District Line and British Rail services".

There are not many people who can boast that their home is featured in the London A-Z but sure enough there it is - page 138, grid reference 6C if you're interested - and what a perfect way to guide friends home for dinner!

For more information call Hayley Simpson, Morden Office on 0208 543 1166.